

=For the 2025 entrance examination in Tokyo=

Tokyo HighSchool Admission Guide for Students whose Language is not Japanese

Information materials for
entrance examination



High School Entrance Guidance Steering Committee
produced by Multi Cultural Centre Tokyo

2025

To everyone who wants to go to high school in Tokyo

Hello everybody!

In Japan, 98 of 100 middle school graduates go to high school. It is necessary to go to high school in order to obtain the necessary qualifications for work or to go on to college or other higher education. We hope that all of you will graduate from high school, find and realize your dreams for the future.

We opened “Guidance for High School Entrance” for those who want to go to high school in Tokyo. With the global spread of the new coronavirus infection calming down, more and more children who have come to Japan want to go to high school.

So we made a simple explanation of the information necessary for students to enter high school in Tokyo.

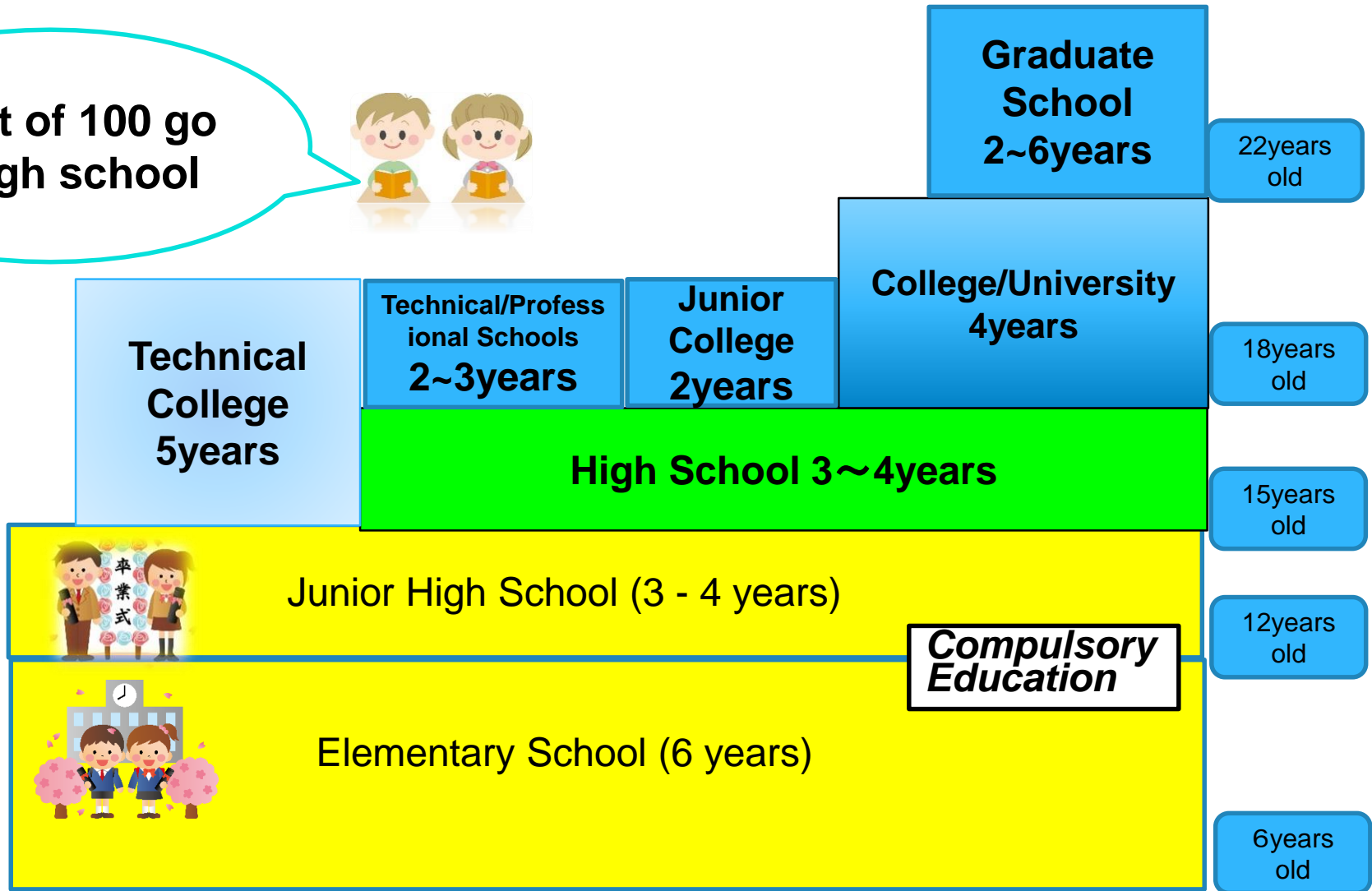
Please read carefully and refer to it.

SCHOOL SYSTEM IN JAPAN



Japanese School System

98 out of 100 go
to high school



Types of High School

- High Schools in Tokyo are divided into various type by “Who made it?”, “Which time do you go to school in?” and “What do you study?”. Here is a brief description of each .
- The Difference Between National・Tokyo Metropolitan・Private
- Three types of “Who made the school?”

Public

National High School

- Established by the country (attached school of the university).
- Many are extremely difficult to enter.
- 8 schools in Tokyo.

Tokyo Metropolitan High School

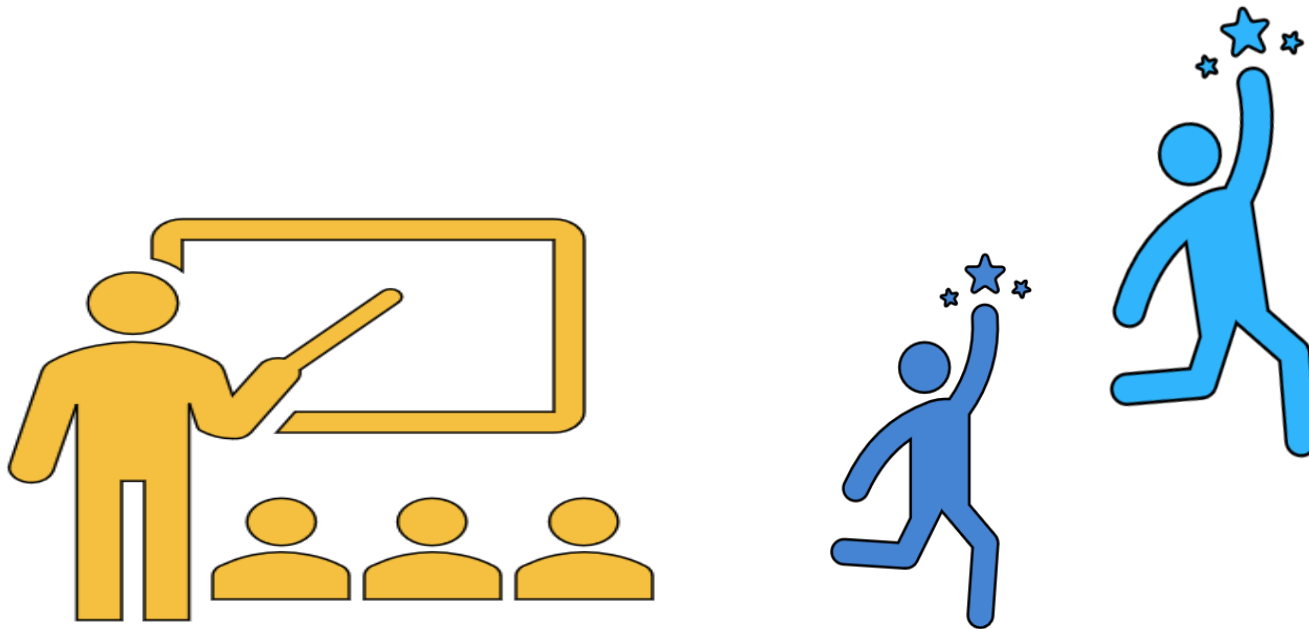
- Established by Tokyo.
- Living in Tokyo with guardian can apply (in case of part-time Course, working place in Tokyo will do).
- About 200 schools in Tokyo.

Private

Private High School

- Established by private enterprise.
- Schools have their own colors and are different in many ways.
- About 240 schools in Tokyo.



Tokyo Metropolitan High School



Full-Time Program and Part-Time Program

The Difference Between Full-Time Program and Part-Time Program.

2 types of “Which time do you go to school in?”

Program	Days to go to school- class time
 Full-Time	<ul style="list-style-type: none">• Class starts from 8:30 am to 3:30 pm.• School day is from Mon to Fri but some school has class on Sat.• 3 years for graduation.
 Part-Time	<ul style="list-style-type: none">• Take class either in morning, afternoon and evening (class time is 4 hours)• Day and Night Part-Time High Schools which has the 3 time zone and Night Part-Time High Schools using the same school building as Full-Time High School.• 4 years for graduation. 3 years for graduation is possible by taking the credit outside of school or taking classes in other time zones.

There are grade system and credit system schools

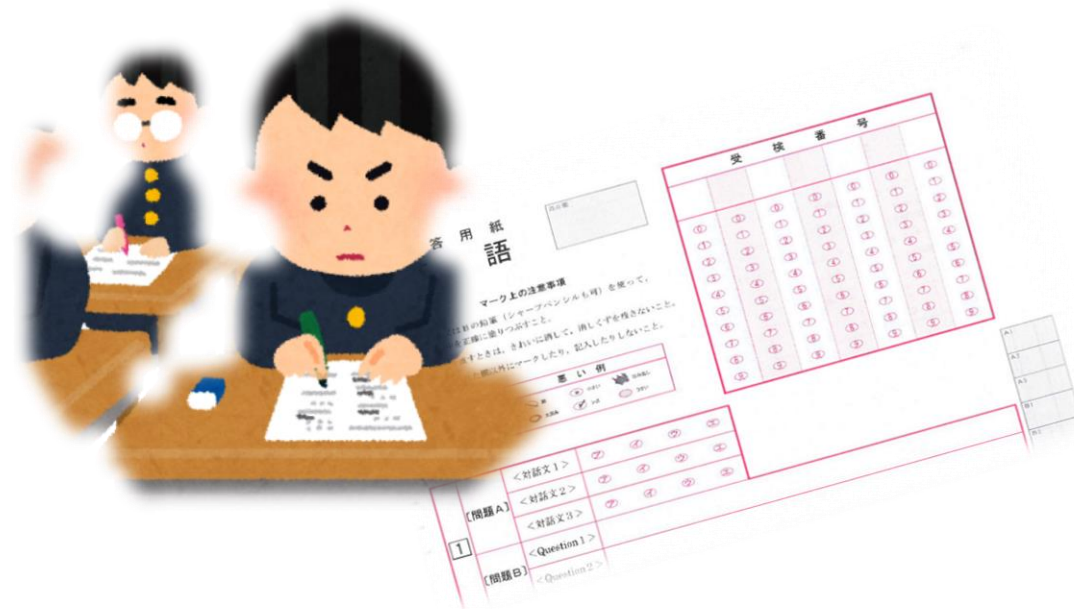
grade system	<ul style="list-style-type: none">◇What you study differs by the Grade (1 — 3 ▪ 4 Grader) .◇If you cannot get the credit of the year, you will be <i>ryunen</i>(repeating the same grade)
credit system	<ul style="list-style-type: none">◇No difference in grade level, just choose and take the required number of credits for the school year◇No difference in grade level so no <i>ryunen</i> but you have to take the credit needed for graduation.

1 class hour in a week⇒1 credit

There are 4 types according to what you study.

types	what you study
General Course	▪ Study normal subjects (Japanese, Social Studies, Math, Science, English etc.)
General Course - Course System	▪ General Course but also focused on the specific field. (Foreign Cultural Course or Fine Arts Course etc.)
Specialized Subject	▪ Study the basics of technology, specialized knowledge and skills directly related to your profession. (Various fields such as Commerce, Industry, Agriculture, Information, Art etc.)
General Subject	▪ Subjects of Both General Course and Specialized Subject are available

About Entrance Examination



Application Qualification

(People who can take the entrance examination of the metropolitan high school)



Completed 9 years of school education



Full-time

=People living in Tokyo with parents



Part-time

=People living in Tokyo or working in Tokyo

Important!!

In the metropolitan high school examination, you must enroll in the first high school you got accepted to

1/26 (Sun) • 27 (Mon)

Admission by Recommendation

Target of exam.	Only 3 rd Year junior high school students in Tokyo.
Admission method	school reports (chōsasho), group discussion, personal interviews, essay compositions, and practical tests etc.
Procedure	Submit a request for recommendation to your junior high school and receive a recommendation from the junior high school principal.
Number of applicants	Not many.
How to apply	★ Apply online.

Entrance Examination for Special Quota

1/26 (Sun)

2/14 (Fri)

**Special Quota For Foreign National Students
residing in Tokyo Metropolitan District.**

Target/ Qualification	Foreign students coming to Japan (Dual nationality allowed) (* Third-year junior high school students in Japan are eligible for those who have come to Japan for up to three years. There is no limit to the number of years for those who have graduated from a local school.) People who live or plan to live in Tokyo
Admission method	Essay composition(Japanese or English) and Interview(Japanese or English)
Procedure	Apply after undergoing qualification confirmation.
Number of applicants/ Test month	Few. (Recruiting 15 to 25 people at one school) Jan(7 schools) Feb(1 school)

Qualification of special quota for foreign students in Tokyo

When: December ※Scheduled: 2 times in December

Where: Tokyo Metropolitan Office

★ Check the homepage of schools or Tokyo Metropolitan Board of Education for the qualification dates.

★ Prepare your application documents early.

Entrance Examination for Special Quota

2/14 (Fri)

Special Quota for Overseas returnee

Target/ Qualification	Having Japanese nationality, living (lived) abroad with their parents and is going to live in Tokyo until admission date.
Admission method	<ul style="list-style-type: none">▪ Japanese ▪ Math ▪ English and Essay composition.▪ Interview and essay composition in Japanese or English. (For Local School Graduates Examination of Kokusai H. S.)
Procedure	Apply after being qualified for high school. (There is a limit to the qualification based on the length of time you lived abroad and after returning)
Implementation schools/Number of applicants	4 schools / Few
How to apply	Internet Application

Entrance Examination for Special Quota

2/14(Fri)

Special Quota For Returning Japanese Displaced by the War in China and their Descendants

Target/ Qualification	Having an address in Tokyo along with the parents who are repatriates or is certain to have an address until the admission date and continue to go to school from Tokyo after that.
Admission method	Interview and essay composition in Japanese.
Procedure	Apply after confirming your qualification at the high school or Tokyo Metropolitan Board of Education. You have to prepare your application documents. (Repatriation Certificate etc.)
Implementation schools/Number of applicants	3 schools / Few
How to apply	Take the application form to the high school where you will take the entrance examination.

2/21 (Fri)

Academic Performance Test

★ Apply online.

Full-time high school

First Exam • The Divisive Previous Exams

Subjects: 5 subjects

(Japanese • Math • English • Social Studies • Science)

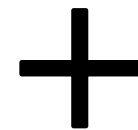
Part-time high school

First Exam • The Divisive Previous Exams

Subjects: almost 3 subjects

(Japanese • Math • English)

The school decides the number of subjects.



Interview

Academic Performance Test

★ Take the application form to the high school.

3/11(Tues)



Full-time and Day and Night
Part-Time high school

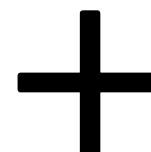
Second Exam・The Divisive Late Exam

Subjects : 3 subjects
(Japanese・Math・English)

3/27(Thurs)



Part-time high school



Second Exam

Subjects : 3 subjects
(Japanese・Math・English)

Interview
✕only
Japanese

★ Take the
application form to
the high school.

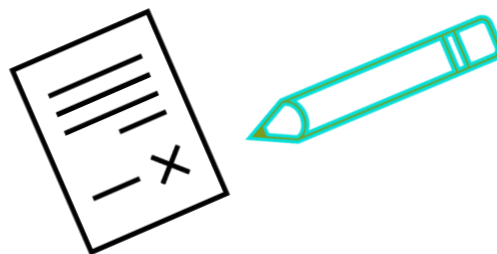
Special arrangements of examination

This support is available to students who need Japanese language instruction, regardless of nationality.



Special Arrangement for the Students Who Need Language Assistance ① <Provide of Furigana (Ruby) >

Target	The students who has been in Japan for less than 6 years and need Japanese language assistance. (regardless of nationality)
Special Arrangement	Provide of Furigana(Ruby) to Kanji on examination test sheet of 5 subjects (Japanese・Math・English・Social Studies・Science). ※In the Japanese language test, there are some parts that do not have Ruby.
Document and Procedure	Submit “Application Form for Special Exam for the Students Who Need Language Assistance (Ruby)”. ★ Proof of arrival period: Prepare passport, etc.

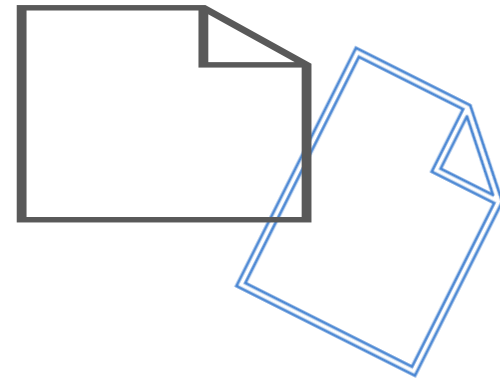


Special Arrangement for the Students Who Need Language Assistance ②

<Provide of Furigana, Can bring in dictionary >

Target	The students who has been in Japan for less than 3 years and need Japanese language assistance. (regardless of nationality)
Special Arrangement	<ul style="list-style-type: none"> ▪ Provide of Furigana(Ruby) to Kanji on examination test sheet of 5 subjects (Japanese ▪ Math ▪ English ▪ Social Studies ▪ Science) ▪ Can bring in dictionary (up to two) ✖ Excludes Japanese language test ▪ Extend test time by 10 minutes for 4 subjects. ✖ Excludes Japanese language test
Document and Procedure	<p>Submit “Application Form for Special Exam for the Students Who Need Language Assistance (Ruby, Dictionary)”.</p> <p>★ Proof of arrival period: Prepare passport, etc.</p>

How to Apply for the Examination and Documents






Application Methods

①Apply online ②Bring it to the school

①Applying Online

Internet Application Exam	<ul style="list-style-type: none">• Admission by Recommendation (1月)• Examination for Overseas Returnee (2月14日)• First round of admissions/First phase of application period (2月)	
Data that must be submitted online	<ul style="list-style-type: none">• Application Form• Entrance Examination Fee	★If it is difficult to submit online, please contact the high school where you will take the exam and submit on paper.
 Other Documents	Submit at the post office ⇒ Submit in the form of “simple registered mail”	

☆ ②Bring the documents to the school

- Residing in Tokyo-based exam (January and February), Second round of admissions (March), Second phase of application period for part-time high schools (March)

Application documents

★In the case of Tokyo Metropolitan District Junior High School Students.



	Documents	Place to receive
①	Application Form	Junior H.S.
②	School Report (Chōsasho)	Junior H.S.
③	Receipt of entrance examination fee Full-time ¥2200 Part-time ¥950	Online payment or Transfer at post office
④	▪ Application Form for Special Exam for the Students Who Need Language Assistance (Will provide Furigana for those who have been in Japan for 6 years or less and wish to apply).	Junior H.S.
⑤	▪ Application Form for Special Exam for the Students Who Need Language Assistance (Will provide Furigana / can bring in dictionary for those who have been in Japan for 3 years or less and wish to apply).	
⑥	Cover Letter (Jiko PR kādo) (Only for the schools with interview test)	Junior H.S.

Application documents

★In the case of the students who graduated from a Junior High School outside Japan or who do not attend a Tokyo Metropolitan District Junior High School.

	Documents	Place to receive
①	Application Form	School to take exam or Tokyo Metropolitan Center for Educational Guidance
②	Receipt of entrance examination fee Full-time ¥2200 Part-time ¥950	Online payment or Transfer at post office
③	Junior High School Diploma, and Certificate of School Record from outside Japan	Get from the school which you graduated
④	Certificate of the entries in the resident' card ★ In principle, you need both your and your parents' certificate of the entries in the resident's card.	Ward office or City hall
⑤	<ul style="list-style-type: none">▪ Application Form for Special Exam for the Students Who Need Language Assistance (Will provide Furigana for those who wish to apply).▪ Application Form for Special Exam for the Students Who Need Language Assistance (Will provide Furigana / can bring in dictionary for those who wish to apply).	School to take exam or Tokyo Metropolitan Center for Educational Guidance
⑥	Cover Letter (Jiko PR kādo) (Only for the schools for interview test)	School to take exam or Tokyo Metropolitan Center for Educational Guidance

※ この受検票は、合格通知書を受領する時及び得点等の開示を請求する時に必要なのでなくさないこと。

②Receipt of entrance examination fee

(受検票・裏)

《 入学願書提出期間 》
令和6年1月31日(水)から2月6日(火)まで

(のりしろ)

領収証書貼付欄

貼る前に領収証書を確認してください。

- 1 金融機関(銀行・郵便局等)の領収印はありますか?
- 2 端の色と金額は?

- ・全日制の人は、黒色(2,200円)です。
- ・定時制の人は、グレー(950円)です。

入学考査料は、納付書裏面に記載の納付場所で納付してください。ただし、納付したものは、いかなる理由でも還付しません。

入学考査料納付後の領収証書は、入学願書受付の際に必要なので、領収証書貼付欄に貼り付けてください。

(のりしろ)

(「様式4」の裏面)

入学願書記入上の注意

- 1 高等学校長の宛名
志願する高等学校名を記入してください。
- 2 入学願書及び受検票の出願区分の欄等
志願する出願区分を赤色の○で囲ってください。
- 3 第1志望の欄
志願する高等学校名とコース、科(小学科・分野)、部名を記入してください。
- 4 第2志望～第5志望の欄
部及び専門学科を第1志望に志願する者は、順位の欄(第2志望から第5志望の各欄)に、志望の順位に従って、機械、電子、電気などと記入してください。第2志望以下を志望しない場合には、各順位の欄に「なし」と記入してください。記入のない場合は、第2志望以下を志望しないものとみなします。
- 5 志望校「変更後」の欄
出願時には何も記入しないでください。
- 6 志願者の氏名の欄には、住民票に記載されているとおりの氏名を記入してください。
外国籍を有し住民票に通称名が記載されていて、受検票に通称名のみを記載を希望する者は、志願者の氏名の欄は本名の後に通称名を()を付けて記入してください。この場合、受検票の受検者氏名については、通称名だけで構いません。
- 7 生年月日の欄の年齢は、令和6年3月31日現在で記入してください。
- 8 住所の欄には、例えば、「西新宿二丁目8番1号」は「西新宿2-8-1」と記入しても構いません。
- 9 出願日以降入学式までの間に都内に転居することが確実な者は、転居予定先の住所を「入学式までに転居予定の人は入学後の住所」欄に記入してください。
- 10 在学(出身)中学校名の欄には、都外の中学校の場合、道府県名から記入してください。
- 11 保護者の現住所が志願者の現住所と同じ場合は、「志願者と同じ」と記入しても構いません。
- 12 成人受検者特別措置希望欄(定時制志願者のみ)
成人受検者特別措置とは、令和6年3月31日現在で満18歳以上の者で、希望する者については、学力検査を行わず、面接及び作文により受検できることをいいます。この措置を希望する者は、成人受検者特別措置希望欄に赤色で○印を記入するとともに定められた申請書を提出してください。
- 13 ルビ振り等特別措置希望欄
国籍を問わず、入国後の在日期間が入学日現在原則として6年以内の者で、日本語指導を必要とする生徒等に対する特別措置(ルビ付問題)を希望する者は、ルビ振り等特別措置希望欄の「ルビ付問題」に赤色で○印を記入してください。
国籍を問わず、入国後の在日期間が入学日現在原則として3年以内の者で、日本語指導を必要とする生徒等に対する特別措置(ルビ付問題・辞書付込み)を希望する者は、ルビ振り等特別措置希望欄の「ルビ付問題・辞書付込み」に赤色で○印を記入してください。
なお、申請に当たっては、出願時に各特別措置に定められた申請書を提出してください。
- 14 保護者氏名は必ず自署してください。
- 15 都内の中学校に在学していない者は、中学校名、中学校長名、中学校の電話番号の記入及び中学校長の公印の押印は必要ありません。
- 16 黒のペン又はボールペンで記入してください。ただし、摩擦に伴う温度変化等により消色するインクを用いたペン又はボールペンは、使用しないでください。
- 17 ※欄は記入しないでください。

個人情報の提供に関する同意署名欄(任意)

私は、東京都立高等学校入学考査選抜(第一次募集・分割前期募集)における検査結果の全て【(1)受検番号(2)氏名(3)在籍学校名(4)学力検査の得点(5)面接の得点(6)小論文・作文の得点(7)実技検査の得点(8)志願申告書の得点】を、在籍する学校における進路指導や学習指導に活用するために、都立高等学校から在籍する学校へ提供することに同意します。

令和 年 月 日 (署名)

(注意) ※ 上記の内容に同意する場合のみ、志願者本人が自署してください。

※ 在籍する学校に提供された入学考査選抜における検査結果は、個人情報としてその秘密を厳守し、進路指導や学習指導以外の目的には一切使用いたしません。

※ 都内の中学校に在学していない者は、記入の必要はありません。

③Certificate of the entries in the resident' card

(様式応3) (A4判)

住 民 票 記 載 事 項 証 明 書						
①住所			②世帯主 氏 名			
③氏 名	④生 年 月 日	⑤住 所 を 定 め た 年 月 日	⑥世帯主との 続 柄	⑦性別	⑧国籍・地域	

※都立高校 使用欄
旅・在・他

上記事項は住民票に記載があることを証明する。

年 月 日

区市町村長氏名

公印

- (注意) 1 証明を要する者について、住民票に記載されているとおり枠内に記入し、**令和5年11月20日以降に証明を受けてください。**
- 2 区市町村所定の様式も使用することができます。ただし、上記①から⑦に該当する項目が含まれていることが必要です。
- 3 志願者が成人の場合は、保護者についての記載は不要です。
- 4 志願者が**外国籍の場合は、⑧の国籍・地域についても証明を受けてください**(志願者以外については、証明は必要ありません。)。なお、住民票に通称名が記載されている場合は、「氏名」欄に括弧書きで通称名の証明を受けてください。

【都立高校使用欄】
 *外国籍を有する志願者のうち、在日期间の確認が必要な志願者の上陸許可年月日を記入する(志願者のみの確認でよい)。
 *上陸許可年月日を確認した書類の種類(旅券、在留カード、その他)について、「旅・在・他」のいずれかを○で開けよ。

④ Application Form for Special Exam for the Students Who Need Language Assistance

(1) Provide of Furigana (Ruby)

★Target:

The students who has been in Japan for less than **6 years** and need Japanese language assistance.
(**regardless of nationality**)

(様式 30) (A 4 判)

受付番号	変更前	
	変更後	

日本語指導が必要な生徒等の都立高等学校受検に対する 学力検査等実施上の措置申請書 (ルビ付問題)

年 月 日

東京都立 _____ 高等学校長 殿

保護者住所 _____

保護者氏名 (自署) _____

志願者との続柄 _____

東京都立高等学校入学者選抜実施要綱の規定により、日本語指導を必要とする生徒等の都立高等学校受検において学力検査問題等にひらがなのルビを振る特別措置を下記のとおり申請します。

記

- 1 志願校名 東京都立 _____ 高等学校 (全・定) _____ コース・科 (分野)
- 2 志願者 (1) 氏名 (通称名) _____ (_____)
(2) 生 年 月 日 _____ 年 _____ 月 _____ 日生
(3) 在学 (出身) 中学校 _____ 立 _____ 中学校
(4) 最終入国年月日 _____ 年 _____ 月 _____ 日

- 3 申請理由 (中学校での学習実態等を含め、ひらがなのルビを振る措置を希望する理由を具体的に記入してください)

- 4 中学校長記入欄

上記のとおり、受検上の措置が必要であると 考えます。			年	月	日
校長名	立	中学校長	<div style="border: 1px solid black; padding: 5px; text-align: center;"> 公印 </div>		
学校の電話番号					
申請内容について追加する意見があれば記入してください。					

(注意)

- 1 本申請書は、出願書類提出時に志願する都立高校長に提出してください。
- 2 中学校に在学していない者は、入国後の在日期間が6年以内であることを証明する公的機関発行の書類も併せて提出してください。ただし、中学校長を経由する必要はありません。
- 3 第一次募集・分割前期募集及び分割後期募集・第二次募集における学力検査問題の共通問題及び在京外国人生徒対象 (4月入学生徒の選抜及び9月入学生徒の選抜) における検査問題が、本措置の対象となります。

⑤ Application Form for Special Exam for the Students Who Need Language Assistance

(2) Provide of Furigana (Ruby) Can bring in dictionary

★Target:

The students who has been in Japan for less than **3 years** and need Japanese language assistance.
(**regardless of nationality**)

(様式 31) (A 4 判)

受 付 番 号	変更前	
	変更後	

日本語指導が必要な生徒等の都立高等学校受検に対する
学力検査実施上の措置申請書 (ルビ付問題・辞書持込み)

年 月 日

東京都立 _____ 高等学校長 殿

保護者住所 _____
保護者氏名 (白書) _____
志願者との続柄 _____

東京都立高等学校入学選抜実施要綱の規定により、日本語指導を必要とする生徒等の都立高等学校受検において、ひらがなのルビを振った学力検査問題での検査の実施に加え、辞書の持込み及び検査時間の延長の特別措置を下記のとおり申請します。

記

- 1 志願校名 東京都立 _____ 高等学校 (全・定) _____ コース・科 (分野)
- 2 志願者 (1) 氏名 (通称名) _____ ()
(2) 生年月日 _____ 年 _____ 月 _____ 日生
(3) 在学 (出身) 中学校 _____ 立 _____ 中学校
(4) 最終入国年月日 _____ 年 _____ 月 _____ 日
(5) 入国前の最終学校 (国名・都市名) _____

上記のことについて事実と相違ありません。

年 月 日

校長名 _____ 立 _____ 中学校長 _____

公印

(注意)

- 1 本申請書は、出願書類提出時に志願する都立高校長に提出してください。
- 2 中学校に在学していない者は、入国後の在日期間が3年以内であることを証明する公的機関発行の書類も併せて提出してください。ただし、中学校長を経由する必要はありません。
- 3 持ち込める辞書は、希望する外国語について、日本語に対する当該外国語の訳が記載されている辞書1冊、当該外国語に対する日本語の訳が記載されている辞書1冊の合計2冊を原則とします (例: 日中辞典と中日辞典)。

なお、持ち込む辞書は、第一次募集・分割前期募集は令和6年2月9日 (金) から令和6年2月14日 (水) 正午まで、分割後期募集・第二次募集は令和6年3月6日 (水) から令和6年3月8日 (金) 正午までに、受検する都立高校長に提出してください。ただし、辞書に書込みがある場合など、志願先の都立高校長の判断により、提出した辞書が使用できないことがあります。

- 4 電子辞書は使用できません。
- 5 第一次募集・分割前期募集及び分割後期募集・第二次募集における学力検査問題の共通問題が、本措置の対象となります。
- 6 辞書の持込みに伴い、各教科10分の検査時間の延長があります (別室)。ただし、国語の検査では辞書の持込みはできません。また、国語の検査では、時間延長はありません。

⑥ Cover Letter (Jiko PR kādo)

(様式12) (A4判)

受検番号	コース・科(分野)・部	受検番号	コース・科(分野)・部
文化・スポーツ等 特別推薦		一般推薦	
		一般選抜	

自己PRカード

東京都立

高等学校長 殿

年 月 日

立 中 学 校

氏 名

1 志望理由について

(この学校を志望した理由と入学してから自分が取り組みたいと思うことなどについて『本校の期待する生徒の姿』を参考にして記入しましょう。)

2 中学校生活の中で得たことについて

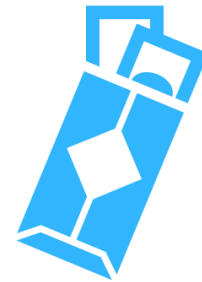
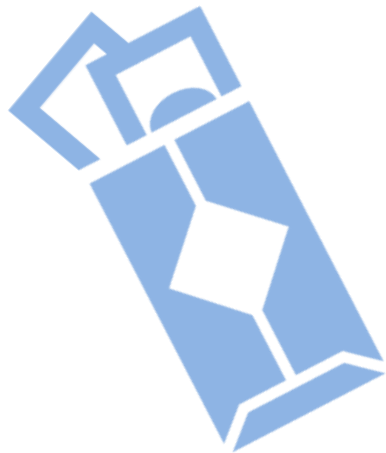
(中学校生活の中で自分が特に伝えたいことを学校内外で体験したことから選び、そこから自分が得たことについて具体的に記入しましょう。)

3 高等学校卒業後の進路について

(将来の夢や目標、将来なりたい職業など、高等学校卒業後の進路について自分が考えていることを具体的に記入しましょう。)

- (注意) 1 志願者が黒のペン又はボールペンで記入する。ただし、摩擦に伴う温度変化等により消色するインクを用いたペン又はボールペンは、使用しないこと。
 なお、コピー等鮮明な表記のものは認める。
 2 推薦に基づく選抜を志望する者、学力検査に基づく選抜において面接を実施する都立高校を志願する者は、この自己PRカードを出願時に提出する。また、面談の対象となる者、一般の学力検査における引揚生徒の受検についての措置又は定時制成人受検者特別措置により受検する者についても、出願時に提出する。

Tuition Fee





1. Tuition etc.

Cost		 Full time	 Part time
At the time of the examination	Entrance Exam Fee	¥ 2,200	¥ 950
	Entrance fee	¥ 5,650	¥ 2,100
After passing the exam.	Tuition (annual)	¥ 118,800	¥ 32,400
	In the case of School support funds	↓ ¥0	↓ ¥0

There is no tuition fee due to the school support funds to a student's household with an annual income level of less than ¥9,100,000.

However, procedure is required after entering high school.

2. Other Expenses

When	Costs	Notice
1st year  	¥100,000~ 250,000 <ul style="list-style-type: none"> ▪ School Entrance Fee ▪ School Uniform, Gym Clothes ▪ Transportation Expenses ▪ Textbook fee ▪ Deposit etc. 	March (before admission) 100,000~150,000 yen required. You have to pay the entrance fee, school uniform fee etc. first. Let's prepare!
		After admission If you don't have enough money, consult high school. There are various payments methods as such as installments, etc. There is also a scholarship system.
2nd year onwards	Less than 1 st year	

Preparation for Entrance Examination



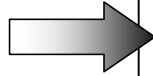
- 1. Future learning schedule**
- 2. Let's decide the school
where you want to study!**

~For 3rd grader in Japanese junior high school~

1. Schedules for future exam.

July

First survey about
future perspectives

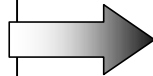


- Do you like to attend high school or find employment?
- Do you like to go to a Tokyo Metropolitan high school?
- Do you like to go to a private school?
- Do you wish to attend a particular high school?

Academic performance of 1st Semester

- Academic records of the 1st semester are crucial!

Parent-Teacher-Student
Meeting



- Which is your first choice of high school?
- Study plans for summer vacation.
- Visiting a high school during summer holidays.

Things to do during summer
vacation

Let's attend supplementary
lessons at school or visit a high
school.

Let's study hard during the summer
vacation!

**Summer vacation is the most important time for
your studies!**

Study Japanese/Math/English

Attend tutorial support class, if you can.

September 2nd Semester

Gather information on High Schools!
Attend school cultural festivals!
Introductory sessions/trial classes in September–December as usual.

Check the school homepage

• Take a trial examination at school and / at other venues, in the second semester.

October

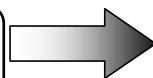
Mid-term Examinations

November

Guidance session for future courses at Junior High Schools.

Second survey about future perspectives

Parent–Teacher–Student Meeting



Which High Schools will you apply for?

• Would you like a recommendation to attend a private, or a Tokyo Metropolitan high school?

Final Examinations

December

Internal academic evaluation will be completed

Evaluation will be based on performance records from 1st and 2nd semesters!

Third survey about future perspectives

Parent-Teacher-Student Meeting

Academic performance of 2nd Semester

** Career consultation about private high school*

From December 15th: Consultation on high school enrollment (with Junior high school teachers and private high school teachers in Tokyo) as usual year.

Recommended students & those who will take exams.

©But this year, the schedule is not yet certain.

Fill in high school names in application forms

Final Decision!

- Make sure to try admission exams from previous years of your targeted schools.
Japanese/Math/English
(Social studies/Science)
- Attend nearby tutorial support class if you can.

Winter Vacation

3rd semester

January Entrance examination

Internal recommendation to enter private high school
Internal recommendation to enter Tokyo Metropolitan high school
Special quota for foreign national students

* It is difficult to secure an internal recommendation for a Tokyo Metropolitan high school.

February Entrance Examination

Admission exams for private high school
Admission exams for Tokyo Metropolitan high school
▪ Special quota for overseas returnee
▪ Special quota for Returnees and Repatriates
▪ The first-term exam.

March Entrance Examination

Admission exams for Tokyo Metropolitan high schools (the second-term exam, The divisive late exam)

Admission exams for Tokyo Metropolitan part-time high schools (the second-term exam)

Various Application Methods

1. Internet
2. Mail
3. Bring your own application

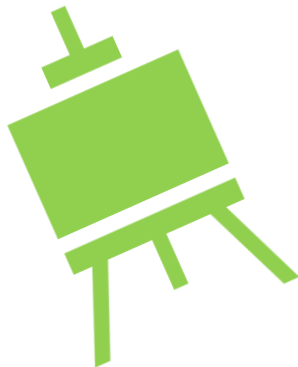
Check the information on entrance examinations carefully!

2. Let's decide the school you want to study!

Carefully research the features and choose the school that suits you !

School atmosphere or features, Level, Distance from home, Japanese language support, etc.

Next; Schools with relatively many foreign students



1. Schools with Special Quota For Foreign National Students

Full time system・Foreign students who have been in Japan for less than three years

High School Name	Exam day	
Asuka	1/26	❖ Content of entrance examination ・Essay composition(Japanese or English) and Interview (Japanese or English) ❖ There is a qualification confirmation in December
Tagara		
Takenodai		
Minami-katsushika		
Fuchu-Nishi		
Rokugo-Koka		
Suginami-Sogo		
Kokusai	2/14	

2. Day and Night Part-Time High Schools

Credit system

You can choose three parts in the morning, afternoon and evening and enter the school

High School Name	Exam day	
Hitotsubashi	The first-term exam 2/21	❖ Content of entrance examination Japanese・Math・English and Interview(Japanese) ❖ Graduation in 3~4 years
Asakusa	The second-term exam 3/11	
Shinjuku-yamabuki		
Ogikubo		
Sunagawa		
Hachioji-takushin		

3. Challenge School

Part-time High School based on credits.

Offer morning, afternoon and evening classes.

High School Name	Exam day	
Kirigaoka	2/21	<ul style="list-style-type: none">❖ Content of entrance examination<ul style="list-style-type: none">▪ Application Form▪ Interview ▪ Essay compositions✕ No need to submit junior high school grades.❖ Small classes
Setagaya-izumi		
Ooedo		
Roppongi		
Minorigaoka		
Hachioji-takushin		
Odaihashi		

4.Encourage School

- Full time system
- Learning from basics
- Experience-based small class adapted to ability of each student



High School Name	Exam day	
Adachi-higashi	2/21	<ul style="list-style-type: none">❖ Content of entrance examination<ul style="list-style-type: none">▪ Junior high school record▪ Interview▪ Essay composition
Kamata		
Akirudai		
Higashi-Murayama		
Nerima Technical High School		
Nakano Technical High School		

5. Night Part-Time High School

Studying from 5 p.m. to 9 p.m. in the evening.

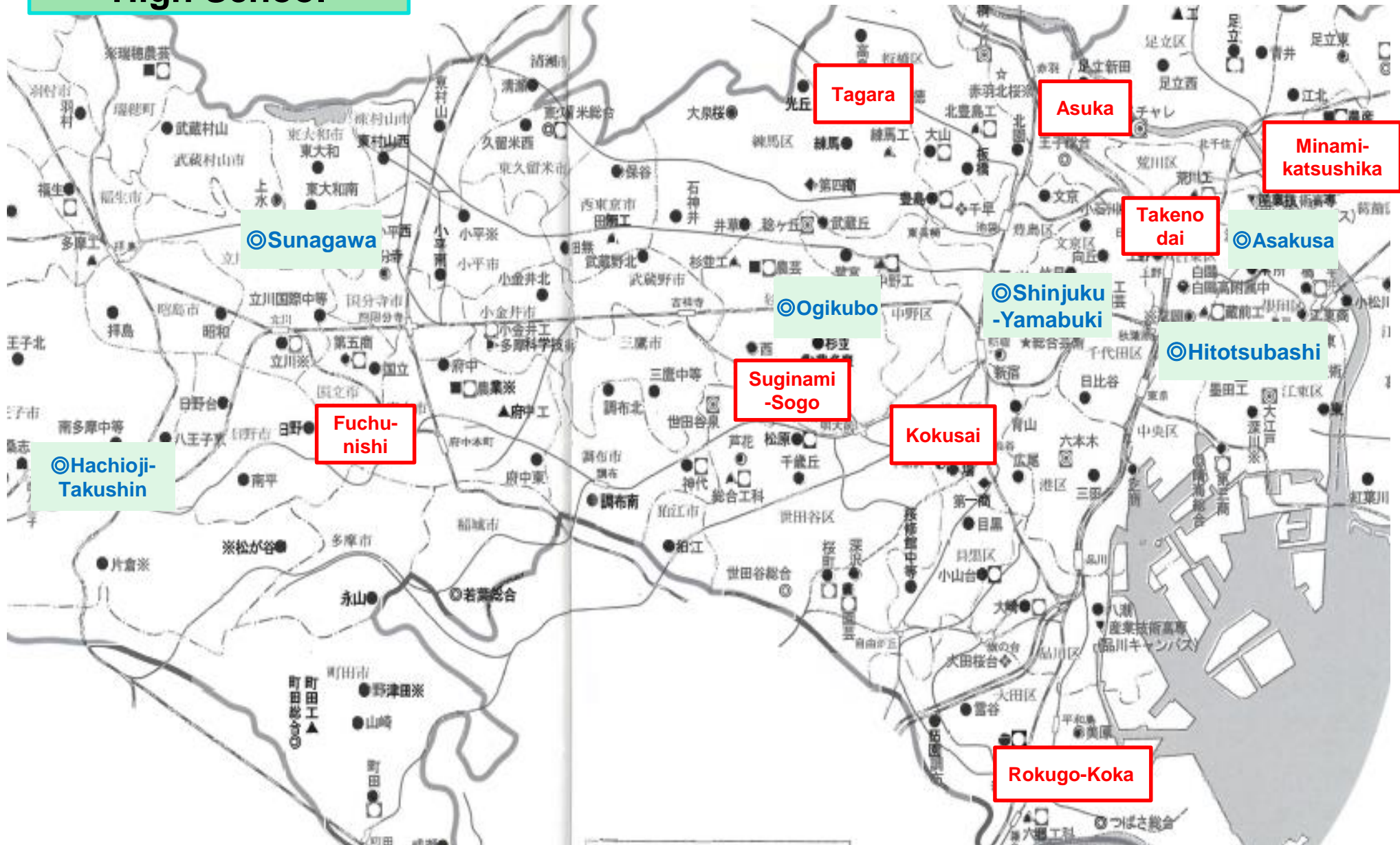
Graduation in 4 years (3years graduation possible at some school)

High School Name	Exam day	
There are about 40 night part-time high schools in Tokyo	The first- term exam 2/21	❖ Content of entrance examination
		Japanese・Math・English and Interview
	The second- term exam 3/27	❖ Graduated 3～4 years
		❖ Small class ❖ Japanese support system

Map of Metropolitan High School

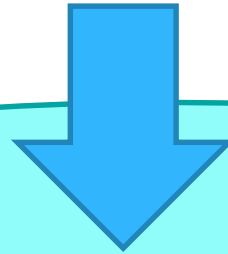
Schools with Special Quota for Foreign Students (8schools)

◎⇒ Night and Daytime Part-time high school (6 schools)



People who do not Know how to study.

People want to talk about high school.



Let's go to volunteer support classroom near your house.



Volunteer Support and Consultation Groups

Arakawa-ku	Tabunka Free School – Main Campus (Tabunka Kyōsei Center Tokyo)	① JR Mikawashima Station (Joban-line) 5min ② Shin-mikawashima Station (Keisei-line) 5min ③ Machiya Station (Tokyo metro Chiyoda-line) 12min TEL/FAX: 03-6807-7937 e-mail: info@tabunka.or.jp URL: https://tabunka.or.jp/en/
Nerima-ku	CCS Nerima Center <div>※ Online support</div>	e-mail: ccs@e-mail.jp URL: http://ccs-ngo.main.jp/
Suginami-ku	Tabunka Free School – Suginami Campus (Tabunka Kyōsei Center Tokyo)	logi Station (Seibu Shinjuku-line) 12min TEL/FAX: 03-6915-0200 Email: info@tabunka.or.jp URL: https://tabunka.or.jp/en/

Volunteer Support and Consultation Groups

Ohta-ku	OCNet Incorporated	Hasunuma Station 3min (Tokyū Tamagawa-line, Ikegami-line) TEL / FAX : 03-3730-0556 e-mail : jimukyoku@ocnet.jp URL : http://www.ocnet.jp/ja/nihongo/kodomo_nihongo.html
	Legato Ota	Kamata Station (JR Keihintohoku-line) 8min TEL/FAX : 03-3731-3831 URL : http://legatoota.jp/index.html
Shinagawa-ku	IWC Kokusai Shimin no Kai	Omori Station (Keihintohoku-line) North Exit 5min TEL : 03-6423-0954 FAX : 03-6423-0955 e-mail : iwc@npo-iwc.com URL : http://www.npo-iwc.com
	CCS Meguro Center <div>※ Online support</div>	e-mail : ccs@e-mail.jp URL : http://ccs-ngo.main.jp/

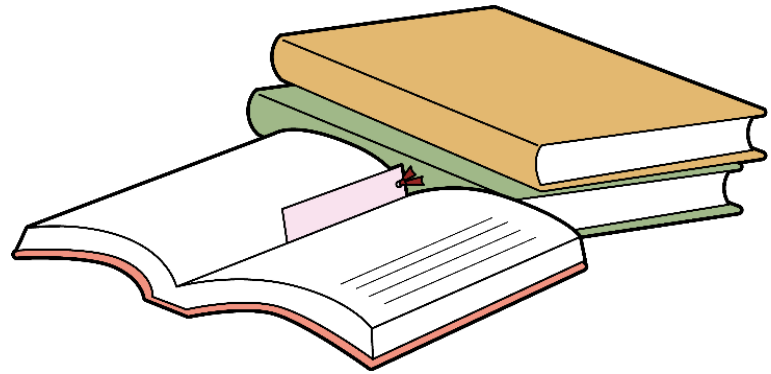
Shinagawa -ku	CTIC (Catholic Tokyo International Center)	Meguro Station 3min (JR Yamanote-line, Tokyo Metro Nanboku-line, Tokyū Meguro- line) Tel:03-5759-1061 Fax:03-5759-1063 URL : https://ctic.jp/en/
Bunkyo -ku	Japanese language support class at TOYO University (SPIRIT) ✕Currently, only online support is available.	Hakusan Station (Toei Subway Mita-line) 5 minutes from exit A3 to Main gate, South Gate 5 minutes from exit A1 to West gate e-mail : gakusupo@yahoo.co.jp URL : http://spirit.toyo.ac.jp/
Musashino- shi	MIA (Musashino International Association)	Musashi sakai Station (JR Chuō-line) 1min TEL:0422-36-4511 FAX:0422-36-4513 e-mail : mia@coral.ocn.ne.jp URL : https://mia.gr.jp/en/
Nishitokyo- shi	NIMIC (Nishitokyo Multicultural and International Center)	Tanashi Station (Seibu Shinjuku-line) 2min TEL/FAX:042 - 461 - 0381 e-mail : info@nimic.jp URL : https://www.nimic.jp/en/
Fussa-shi	YSC Global School	Fussa Station (JR Ome-line) 8min TEL:042-552-7400 FAX:042-513-0266 e-mail : info@kodomo-nihongo.com URL : https://www.kodomo-nihongo.com/

Volunteer Support and Consultation Groups

Hachioji-shi	CCS Hachioji Center <div>※ Online support</div>	e-mail : ccs@e-mail.jp URL: http://ccs-ngo.main.jp/
	Hachioji International Association Hachioji Ekimae Learning Class	① Hachioji Station (JR Chuo-line) 2min ② Keiō Hachioji Station (Keiō-line) 7min TEL/FAX: 042-642-7091 e-mail: 802_kk@jcom.zaq.ne.jp URL: http://hia855.com/#
	Hachioji International Association Kitano Learning Class	Kitano Station (Keiō-line) 3min TEL/FAX: 042-642-7091 e-mail: 802_kk@jcom.zaq.ne.jp URL: http://hia855.com/#

※ There are more support groups in Tokyo. Contact any of the organizations in this list for more information.

Private High School



Entrance Exam System of Private High School

Admission Method	content
General Entrance Exam	Almost 3 subjects Japanese, Math, English
Admission by Recommendation – Single Application (For your First Choice High School)	If you pass, make promise to go to that high school. Consult with your junior high school teacher.
Admission by Recommendation – Dual Application (Can apply to different schools)	You can apply to more than one high school, and if your first choice is not accepted, you can apply to both schools. Can also go to private high school

Important!

★ Since the entrance examination schedule and recommendation criteria differ depending on the school, be sure to check with the school.

★ Once you decide which school you want to attend, let's participate in information sessions and open classes many times.

★ This year's schedule is not yet set. Check the high school's website for more information!

The Costs of Private High School

When	Costs	Content
1 st year	1,000,000~ 2,000,000yen Very different depending on the school. Check carefully on the website etc.	Fee for entrance, Workshops, Facilities, Air-conditioning & heating, Parent associations, and School trip reserve funds, etc.
		Tuition Starting from the 2024, the Tokyo Metropolitan Government will pay tuition for private high schools up to a maximum of approximately 480,000 yen if you apply for it. Others are at your own expense. But in some school, there are also scholarship. Let's ask the school about it.
2 nd ~ 3 rd Year	Less than the 1st year	

Future Plans for Multilingual guidance

Multilingual High School Entrance Guidance in Tokyo Homepage

<http://www.tokyoguidance.com/>



【Bunkyo Guidance】

◆Date : June 30 (Sun)

• **Campus entry permit is required to enter the venue.**

○ Contact Information : Multicultural Center Tokyo

Tel / Fax : 03-6807-7937 (※We can speak on the phone from 10:00 to 17:00.)

【Musashino Guidance】

◆Date : July 14 (Sun) ※Reservations are required.

○ Contact Information : Musashino International Association (MIA)

Tel : 0422-36-4511 / HP : <https://mia.gr.jp/>

【Ohta Guidance】

◆Date : July 28 (Sun) ※Reservations are required.

○ Contact Information : Legato Ota

Tel : 03-3731-3831 (※We can speak on the phone from 10:00 to 17:00.)

【Hachioji Guidance】

◆Date : September 8 (Sun) ※Reservations are required.

○ Contact Information : Hachioji International Association

Tel / Fax : 042-642-7091

【Shinagawa Guidance】

※Scheduled for October 13th

○ Contact Information : IWC International Citizens' Circle

Tel / Fax : 03-6423-0954 (from 10:00 to 17:00)

【Shinjuku Guidance】

○ Contact Information : Multicultural Center Tokyo

Tel / Fax : 03-6807-7937 (from 10:00 to 17:00)



Tokyo metropolitan high school entrance examination information website

◇Tokyo Metropolitan Board of Education website

https://www.kyoiku.metro.tokyo.lg.jp/admission/high_school/exam/



◇Contact information

①Education Bureau Metropolitan School Education Department High School Education Division Entrance Selection Section

- Tel : 03-5320-6745
- E-mail : S9000011@section.metro.tokyo.jp

②Tokyo Education Counseling Center

- Tel : 03-3360-4175 ※Can only speak Japanese
0120-53-8288

※ Only on Fridays, you can speak in English, Chinese, and Korean.